



PIPE COUPLINGS

HAMMER UNION - FIGURE 400

4,000 PSI CWP - 6,000 PSI TEST

FEATURES & APPLICATIONS:

- Ideal for manifold & pumping service.
- Figure 400 features a precision ball and cone sealing surface for sure metal-to-metal seal. Recommended for water, oil and gas applications where working pressures do not exceed 4,000 PSI NSCWP.

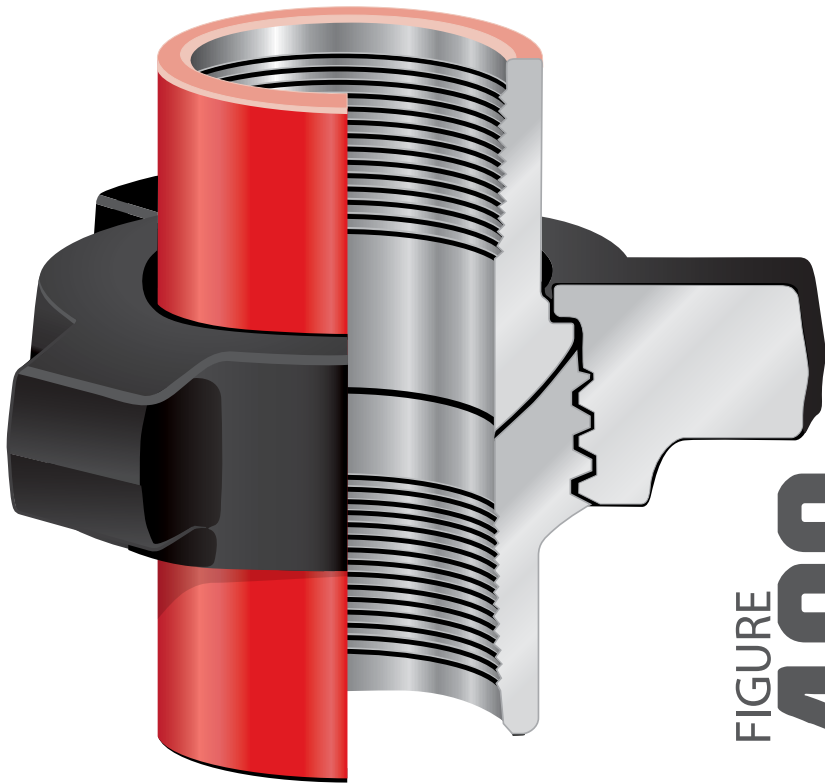


FIGURE
400

TECHNICAL DATA:

- Sizes: 2", 3", 4"
- Pressure Rating: 4,000 PSI NSCWP
- End Connections: Threaded
- Color Code: Red Subs / Black Nut

4000 PSI CWP

SIZE	FIGURE 400
2"	HU400-200T
3"	HU400-300T
4"	HU400-400T



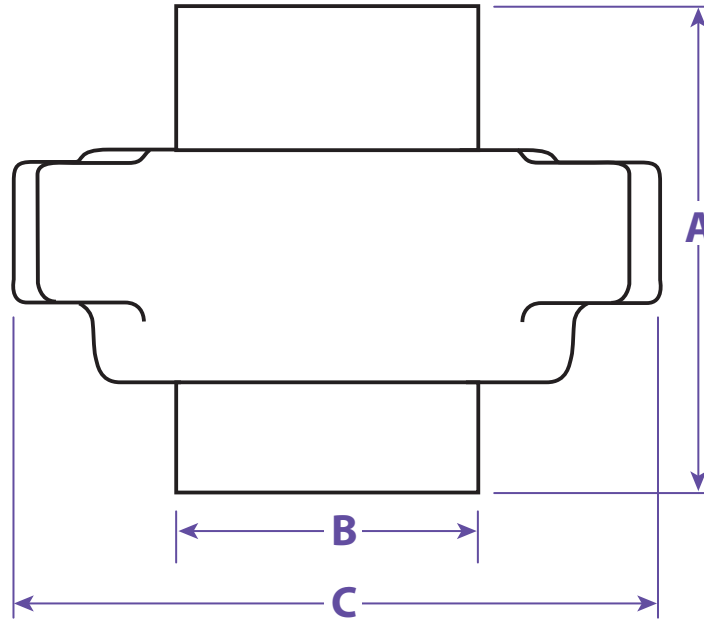
Information contained on this page is for general information purposes only. Seal Fast Inc. assumes no responsibility for errors or omissions for this product.



PIPE COUPLINGS
HAMMER UNION - FIGURE 400

4,000 PSI CWP - 6,000 PSI TEST

Ideal for manifold & pumping service.



Size / Weight									
IN	MM	Lbs	A	B	C	ACME TPI	MATERIAL NUTS	SUBS	Part #
2"	50	11.40	5.225	3.000	7.125	3 STD	SF	SF	HU400-200T
3"	80	20.00	6.110	4.250	8.750	3 STD	SF	SF	HU400-300T
4"	100	29.15	8.200	5.275	9.160	3 STD	SF	SF	HU400-400T

Fig. No.	Standard Service		Pipe Size(in)										End Connection
	CWP	Test	1	1 1/4	1 1/2	2	2 1/2	3	4	6	8		
400	4,000	6,000				✓		✓	✓				T / BW

TITLE PIPE COUPLINGS - HAMMER UNION FIGURE 400

<p>DISCLAIMER</p> <p>All drawings and specifications are subject to change without notice. Drawings represent general dimensions of our products. Seal Fast cannot guarantee the dimensions of the part will exactly match those in the drawing. This drawing is the property of Seal Fast Inc. Copying or reproduction of this drawing is expressly prohibited.</p>	<p>MATERIAL</p> <p>SF / SF</p>
<p>DRAWING NOT TO SCALE</p>	<p>PART #</p> <p>HH100-xxxT</p>

